

# Selected Furniture<sup>LLC</sup>

Commercial Seating that Stands Out

Grade A



CK-2001 



CK-2002



CK-2003



CK-2004



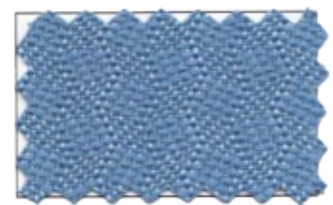
CK-2005



CK-2006



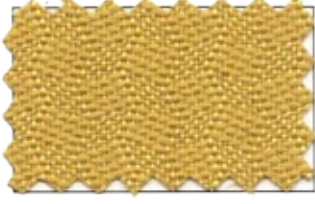
CK-2007



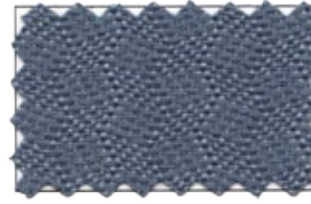
CK-2008



CK-2009



CK-2010



CK-2011 



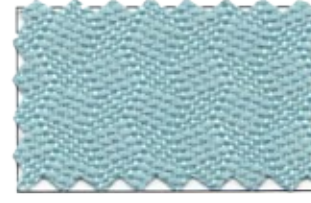
CK-2012



CK-2013



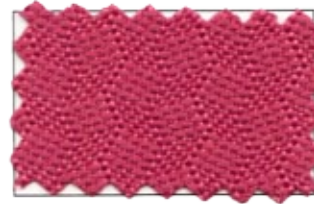
CK-2014



CK-2015



CK-2016



CK-2017



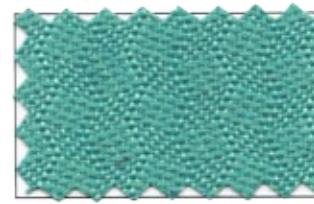
CK-2018



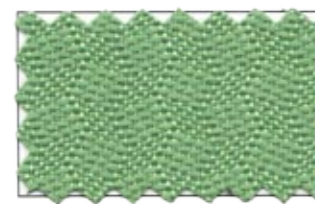
CK-2019



CK-2020



CK-2021



CK-2022



CK-2023



CK-2024 

5000 W. ROOSEVELT RD. 2ND FLOOR | CHICAGO, IL 60644  
T: 773.379.7777 | F: 773.379.7937 | [www.selectedfurniture.com](http://www.selectedfurniture.com)

# Selected Furniture<sub>LLC</sub>

Commercial Seating that Stands Out

Grade A



CO-2501



CO-2502



CO-2503



CO-2504



CO-2505



CO-2506



CO-2507



CO-2508



CO-2509



CO-2510



CO-2511



CO-2512



CO-2513



CO-2514



CO-2515



CO-2516



CO-2517

5000 W. ROOSEVELT RD. 2ND FLOOR | CHICAGO, IL 60644  
T: 773.379.7777 | F: 773.379.7937 | [www.selectedfurniture.com](http://www.selectedfurniture.com)



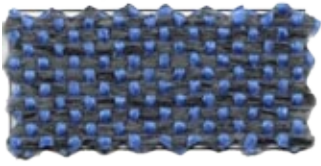
# Selected Furniture<sup>LLC</sup>

Grade B

Commercial Seating that Stands Out



MA-2115



MA-2116



MA-2130



MA-2136



MA-2162



MA-2166



MA-2189



MA-2195



MA-2198



XC-2503



XC-2508



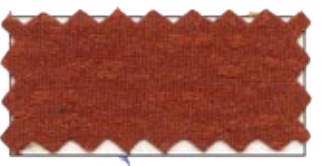
XC-2509



XC-2512



XC-2515



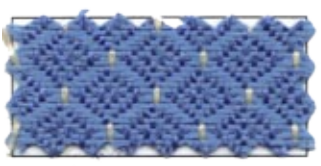
XC-2516



XC-2517



XC-2521



AB-2305



AB-2306



AB-2307



AB-2309



AB-2310



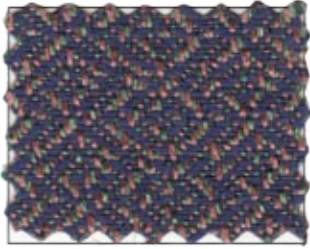
AB-2313

5000 W. ROOSEVELT RD. 2ND FLOOR | CHICAGO, IL 60644  
T: 773.379.7777 | F: 773.379.7937 | [www.selectedfurniture.com](http://www.selectedfurniture.com)

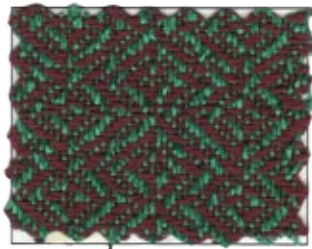
# Selected Furniture<sup>LLC</sup>

Commercial Seating that Stands Out

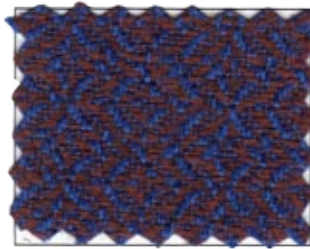
Grade B



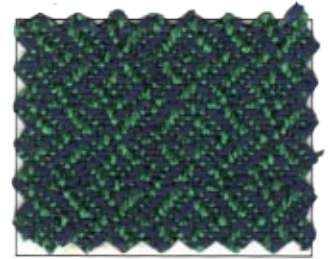
DB-2102



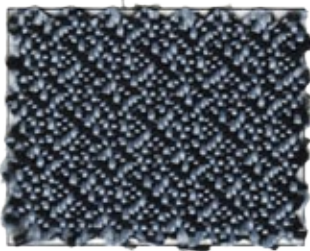
DB-2105



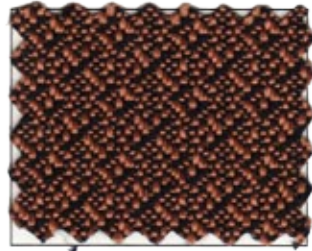
DB-2106



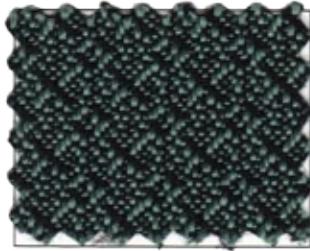
DB-2107



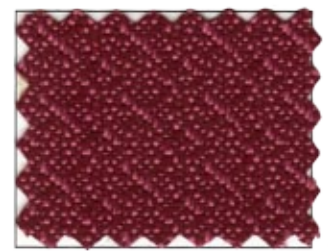
DB-2301



DB-2302



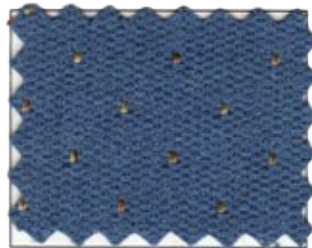
DB-2303



DB-2305



DA-2001



DA-2002



DA-2005



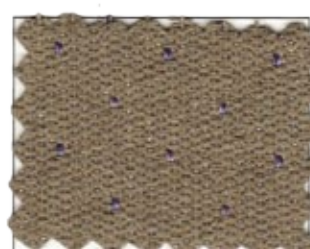
DA-2006



DA-2007



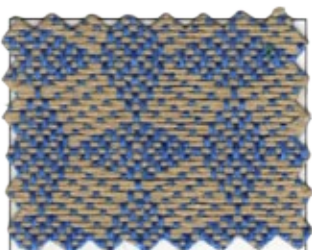
DA-2008



DA-2009



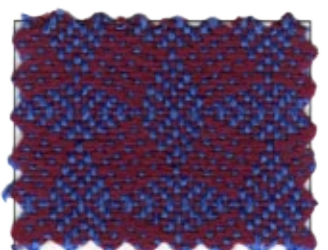
OX-2103



OX-2104



OX-2106



OX-2107

5000 W. ROOSEVELT RD. 2ND FLOOR | CHICAGO, IL 60644  
T: 773.379.7777 | F: 773.379.7937 | [www.selectedfurniture.com](http://www.selectedfurniture.com)

# Selected Furniture<sup>LLC</sup>

Commercial Seating that Stands Out

Grade C



SO2-2901



SO2-2902



SO2-2903



SO2-2904



SO2-2905



SO2-2906



SO2-2907



SO2-2908



SO2-2909



SO2-2910



SO2-2911



SO2-2912



SO2-2913

SO2-2914

SO2-2915

5000 W. ROOSEVELT RD. 2ND FLOOR | CHICAGO, IL 60644  
T: 773.379.7777 | F: 773.379.7937 | [www.selectedfurniture.com](http://www.selectedfurniture.com)



# Selected Furniture<sub>LLC</sub>

Commercial Seating that Stands Out

**Grade C**



T-2001



T-2002



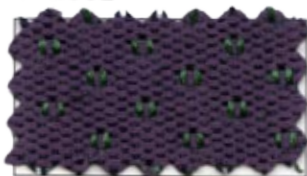
T-2003



T-2004



T-2005



T-2006



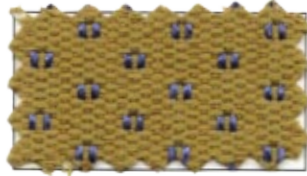
T-2007



T-2008



T-2009



T-2010



T-2011



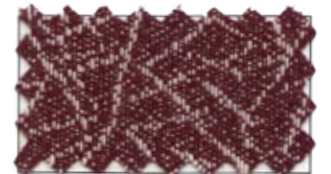
XX-2401



XX-2409



XX-2413 Quick Ship



XX-2416



XX-2428



XX-2438 Quick Ship



XB-2515 Quick Ship



V-2001



V-2002



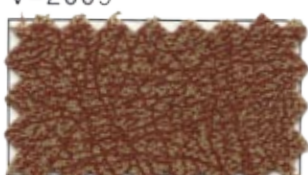
V-2009



SE-2201



SE-2204



SE-2207



SE-2212

5000 W. ROOSEVELT RD. 2ND FLOOR | CHICAGO, IL 60644  
 T: 773.379.7777 | F: 773.379.7937 | [www.selectedfurniture.com](http://www.selectedfurniture.com)



# Selected Furniture<sub>LLC</sub>

Commercial Seating that Stands Out

## CK, CO, V, XX, XC, AB, XB:

Composition:	100% Polyester
Width:	170 cms/ +/-2% 150 cms/ +/-2%
Weight:	250-330 Grams per square metre. +/-5%
Abrasion:	In excess of 50000 Cycles (800g/12Kpa) Martindale
Flammability:	BS 5852(EN 1021-1: 1994 Cigarette) BS 5852(EN 1021-2: 1994 Match) California TB 117 Section E
Light fastness:	4-5 (BS 1006 : 1990)
Rubbing fastness:	Dry:4-5 Wet:4-5

## S02, SE:

Composition:	100% Polyester
Width:	170 cms/ +/-2% 150 cms/ +/-2%
Weight:	250-330 Grams per square metre. +/-5%
Abrasion:	In excess of 50000 Cycles (800g/12Kpa) Martindale
Flammability:	BS 5852(EN 1021-1: 1994 Cigarette) BS 5852(EN 1021-2: 1994 Match) California TB 117 Section E
Light fastness:	4-5 (BS 1006 : 1990)
Rubbing fastness:	Dry:4-5 Wet:4-5

## MA, OX, T:

Composition:	100% Polyester
Width:	170 cms/ +/-2% 150 cms/ +/-2%
Weight:	250-330 Grams per square metre. +/-5%
Abrasion:	In excess of 50000 Cycles (800g/12Kpa) Martindale
Flammability:	BS 5852(EN 1021-1: 1994 Cigarette) BS 5852(EN 1021-2: 1994 Match) California TB 117 Section E
Light fastness:	4-5 (BS 1006 : 1990)
Rubbing fastness:	Dry:4-5 Wet:4-5

## DB, DA:

Composition:	100% Polyester
Width:	170 cms/ +/-2% 150 cms/ +/-2%
Weight:	250-330 Grams per square metre. +/-5%
Abrasion:	In excess of 50000 Cycles (800g/12Kpa) Martindale
Flammability:	BS 5852(EN 1021-1: 1994 Cigarette) BS 5852(EN 1021-2: 1994 Match) California TB 117 Section E
Light fastness:	4-5 (BS 1006 : 1990)
Rubbing fastness:	Dry:4-5 Wet:4-5