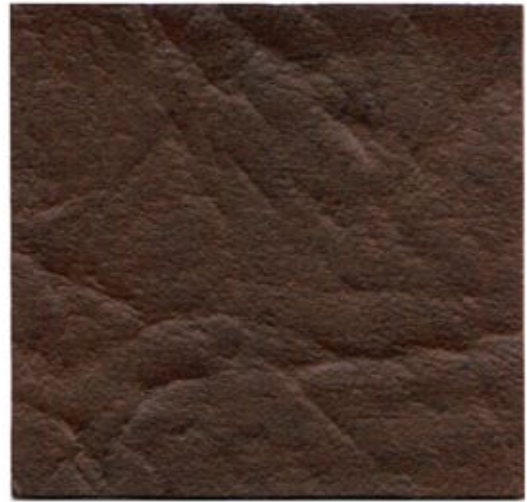




**T01 WALLABY**



**T01 BUCKSKIN**



**T08 WINE**



T03 RED



T13 SUN YELLOW



T12 SUNSHINE



T07 SAND



T05 WHITE



T09 STERLING



T10 DK. GREY



T11 CAMEL



T08 SPRUCE



T02 BURGUNDY



T06 CARIB



T01 BLUE



T04 TEAL

## BASIC BLACK



T01 BUFFALO



T01 MADRID



T01 WALLABY

### TYPICAL APPLICATIONS

Welt Cord, Auto Trim, Interior Accessories, Promotional Bags,  
Accessory Cases and other various applications.

### SPECIFICATIONS

MATERIAL:	PVC Skin Expanded / Polyester Rayon Back
NET WEIGHT:	26 Ounces per Linear Yard
WIDTH:	54 Inches
ROLL LENGTH:	40 Yards
FLAME SPECIFICATIONS:	<ul style="list-style-type: none"><li>• California Bulletin 117, Section E</li><li>• UFAC Class I</li><li>• Business and Institutional Furniture Manufacturers Association F-1-1978 (BIFMA)</li></ul>

### ORDERS

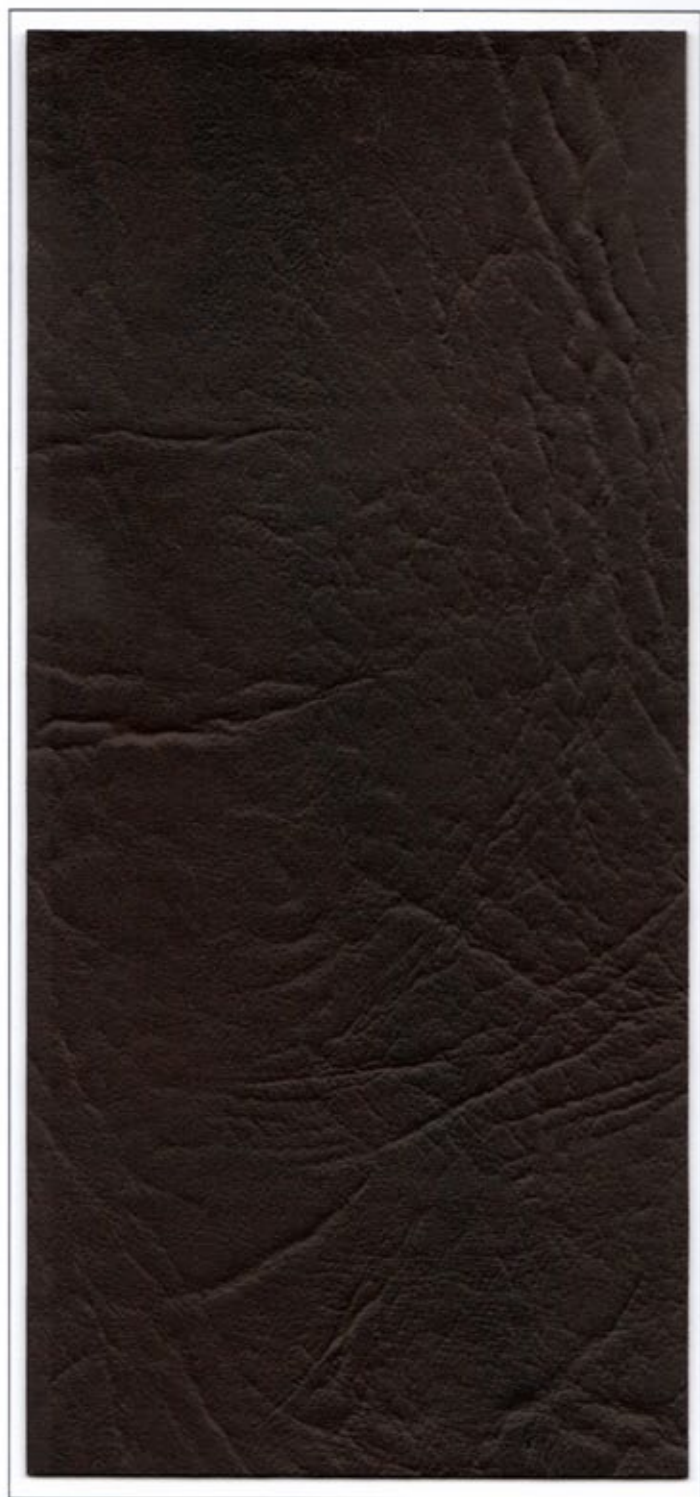
When Placing Orders Please Indicate:

- 1) Grade - Promotional Grade Expanded
- 2) Pattern Name and Number
  - Buffalo - BD 050
  - Madrid - BD 493
  - Panda - BD 629
  - Wallaby - BD 894
- 3) Color Name and Number





Pattern Number BC 103



T02 CHAR BROWN



T14 SNOW



T09 BLACK



T11 WHITE



T08 WINE



T07 SADDLE



T04 INDIGO BLUE



T01 BUCKSKIN



T05 MOSS GREEN

## **TYPICAL APPLICATIONS**

Various Upholstery and Covering Applications

## **SPECIFICATIONS**

<b>MATERIAL:</b>	PVC Skin Expanded/Polyester Rayon Back
<b>NET WEIGHT:</b>	29 Ounces per Linear Yard
<b>WIDTH:</b>	54 Inches
<b>ROLL LENGTH:</b>	40 Yards
<b>FLAME SPECIFICATIONS:</b>	<ul style="list-style-type: none"><li>• California Bulletin 117, Section E</li><li>• UFAC Class I</li><li>• Business and Institutional Furniture Manufacturers Association F-1-1978 (BIFMA)</li></ul>

## **ORDERS**

When Placing Orders Please Indicate:

- 1) Grade - Standard Grade Expanded
- 2) Pattern Name - Cisco
- 3) Pattern Number - BC 103
- 4) Color Name and Number





Pattern Number BC 675



CORK



RAWHIDE



SPICY BROWN



PARSLEY



MAHOGANY



CRANBERRY



LICORICE



EGGSHELL

## TYPICAL APPLICATIONS

Various Upholstery and Covering Applications

## SPECIFICATIONS

MATERIAL:	PVC Skin Expanded/Polyester Rayon Back
NET WEIGHT:	27 Ounces per Linear Yard
WIDTH:	54 Inches
ROLL LENGTH:	40 Yards
FLAME SPECIFICATIONS:	<ul style="list-style-type: none"><li>• California Bulletin 117, Section E</li><li>• UFAC Class I</li><li>• Business and Institutional Furniture Manufacturers Association F-1-1978 (BIFMA)</li></ul>

## ORDERS

When Placing Orders Please Indicate:

- 1) Grade - Standard Grade Expanded
- 2) Pattern Name - Ranchero
- 3) Pattern Number - BC 675
- 4) Color Name and Number



Pattern Number BC 251



T01 GOLDEN BROWN



T05 REGAL GOLD



T02 ANTIQUE BROWN



T03 BLACK



## TYPICAL APPLICATIONS

Various Upholstery and Covering Applications

## SPECIFICATIONS

MATERIAL:	PVC Skin Expanded/Polyester Rayon Back
NET WEIGHT:	27 Ounces per Linear Yard
WIDTH:	54 Inches
ROLL LENGTH:	40 Yards
FLAME SPECIFICATIONS:	<ul style="list-style-type: none"><li>• California Bulletin 117; Section E</li><li>• UFAC Class I</li><li>• Business and Institutional Furniture Manufacturers Association F-1-1978 (BIFMA)</li></ul>

## ORDERS

When Placing Orders Please Indicate:

- 1) Grade - Standard Grade Expanded
- 2) Pattern Name - El Diego
- 3) Pattern Number - BC 251
- 4) Color Name and Number

Pattern Number BB 425



T02 BUCKSKIN



T06 GOLD



T07 PALOMINO



T03 SADDLE



T05 RUSSET



T09 CHESTNUT



T04 GARNET



T01 TOBACCO



T08 MOSS



T10 BLACK



## **TYPICAL APPLICATIONS**

Various Upholstery and Covering Applications

## **SPECIFICATIONS**

MATERIAL:	PVC Skin Expanded/Polyester Rayon Back
NET WEIGHT:	20 Ounces per Square Yard
WIDTH:	54 Inches
ROLL LENGTH:	40 Yards
FLAME RESISTANCE:	<ul style="list-style-type: none"><li>• California Bulletin 117, Section E</li><li>• UFAC Class I</li><li>• Business and Institutional Furniture Manufacturers Association F-1-1978 (BIFMA)</li></ul>

## **ORDERS**

When Placing Orders Please Indicate

- 1) Grade - Commercial Grade Expanded
- 2) Pattern Name - Laredo
- 3) Pattern Number - BB 425
- 4) Color Name and Number



Sand



Ivory



Tobacco



Tan



Char Brown



Pearl



Black



## TYPICAL APPLICATIONS

Various Upholstery and Covering Applications

## SPECIFICATIONS

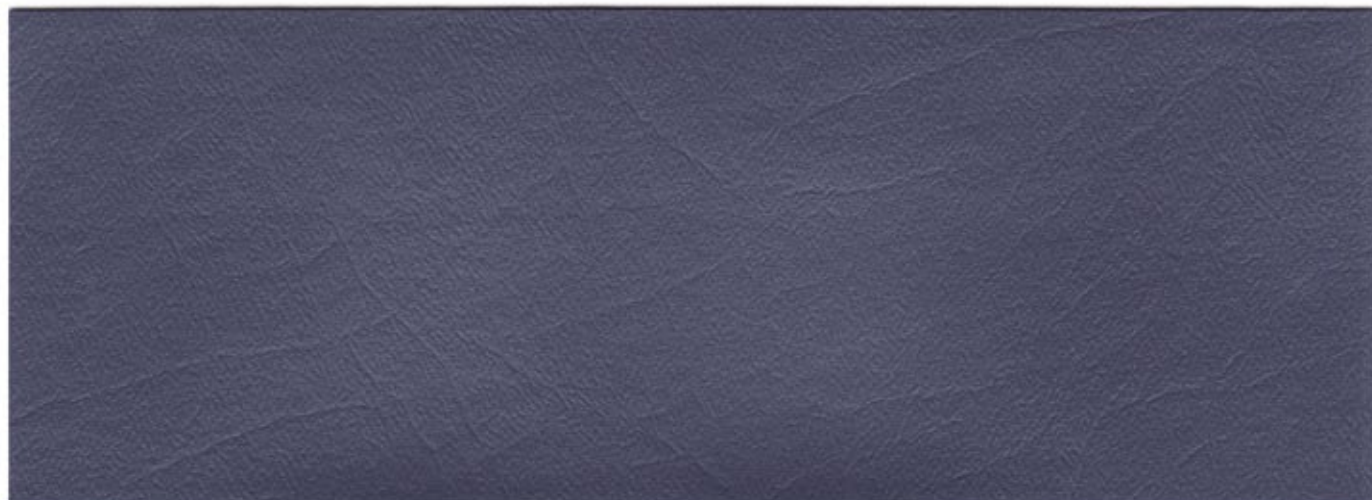
MATERIAL:	PVC Skin Expanded/Polyester Rayon Back
NET WEIGHT:	18 Ounces per Square Yard
WIDTH:	54 Inches
ROLL LENGTH:	40 Yards
FLAME SPECIFICATIONS:	<ul style="list-style-type: none"><li>• California Bulletin 117, Section E</li><li>• UFAC Class I</li><li>• Business and Institutional Furniture Manufacturers Association F-1-1978 (BIFMA)</li></ul>

## ORDERS

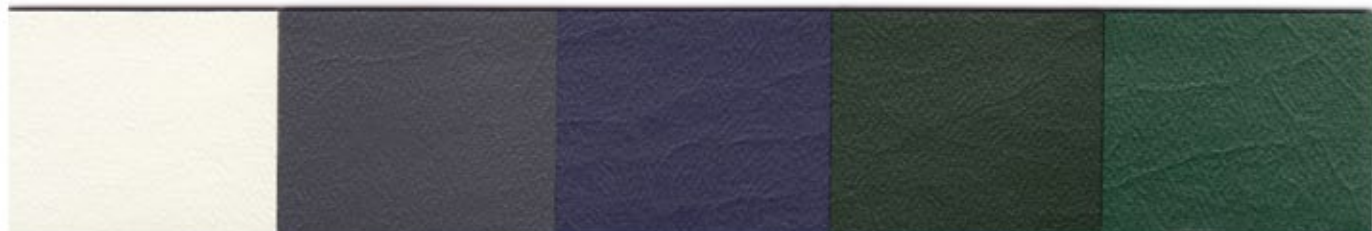
When Placing Orders Please Indicate:

- 1) Grade - Standard Grade Expanded
- 2) Pattern Name - Monticarlo
- 3) Color Name

Pattern Number BB 285



T31 COPENHAGEN



T01 ADOBE WHITE

T33 GUNMETAL

T32 DARK BLUE

T07 DARK GREEN

T09 FOREST



T14 OYSTER WHITE

T35 OCEAN GREY

T38 LIGHT TEAL

T04 BLUE

T37 PLUM



T08 EGGSHELL

T39 WINE

T29 BURGUNDY

T18 RED

T23 SUN YELLOW

T03 BLACK



## **TYPICAL APPLICATIONS**

Various Upholstery and Covering Applications

## **SPECIFICATIONS**

MATERIAL:	PVC Skin Expanded/Polyester Rayon Back
NET WEIGHT:	31 Ounces per Linear Yard
WIDTH:	54 Inches
ROLL LENGTH:	40 Yards
FLAME SPECIFICATIONS:	<ul style="list-style-type: none"><li>• California Bulletin 117, Section E</li><li>• UFAC Class I</li><li>• Business and Institutional Furniture Manufacturers Association F-1-1978 (BIFMA)</li><li>• Motor Vehicle Safety Standard No. 302</li></ul>

## **ORDERS**

When Placing Orders Please Indicate:

- 1) Grade - Commercial Grade Expanded
- 2) Pattern Name - Floridian
- 3) Pattern Number - BB 285
- 4) Color Name and Number



T160 Tigermoth



M42 Adobe

T10 White

T54 Platinum

T37 Ocean Grey

T48 Jade



T50 Lavender

T77 Lt. Grey

T64 Wedgewood

T120 Peacock Blue

T105 Gamma Green



T72 Candy Apple

T44 Blush

T34 Beige

T108 ISO Brown

T62 Steel Grey

T38 Silver

T79 Medium Grey

T12 Royal Blue

T13 Lt. Blue

T63 Teal



T22 Red

T58 Plum

T17 Wine

T76 Grape

T65 Black Cherry

T88 Purple

T85 Pacific Blue

T45 Copenhagen

T11 Dk. Blue

T36 Aqua



T73 Crimson

T107 Hot Sauce

M72 Burgundy

T16 Maroon

T94 Port

T92 Dark Purple

T150 Shadow Grey

T01 Black

T14 Dk. Green

T66 Med. Green



T23 Orange

T42 Sunset

T102 Burnt Sienna

T04 Chestnut

T03 Mocha

T103 Dk. Chocolate

M39 Gingersnap

T104 Fern

T75 Emerald

T74 Dusty Jade



T59 Pumpkin

T21 Burnt Orange

T43 Bisque

M94 Toast

T109 Luggage Tan

T101 Acorn

T07 Camel

T140 Sage

T106 Green Apple

T82 Mint



T51 Marigold

T71 Canary Yellow

T27 Yellow

T95 Sunshine

T09 Parchment

T08 Sand

T61 Soft Gray

T130 Pottery

T100 Moss

T87 Pastel Green



T86 Pale Blue

T52 Mist

T90 Shanghai Green

T83 Mist Green

T15 Bright Green

T81 Midnight Blue

T110 Nickel

T190 Dragonfly

T200 Sapphire

T170 Copper



## PREMIER

PREMIER has been developed to meet the rigorous demands of hospital, contract, and institutional use. PREMIER is designed for all covering requirements and exceeds the accepted industry standards for upholstery products.

PREMIER is ideally suited for commercial and contract upholstery applications, as well as residential:

- office
- lounge
- hospitals
- nursing homes
- family rooms
- restaurant
- hotel/motel
- hair salons
- living room
- casual dining

PREMIER is formulated to meet the flammability\* requirements contained in the following specifications:

- Federal Specification AA-2950A (Supercede CCCA680a)
  - NFPA 701, Small Scale Test
  - NFPA 260 A, Class 1
  - Boston Fire Code (BFD IX-1)
  - Designed to pass FAA 25.853
  - Port Authority of NY & NJ
  - California Fire Regulation (Bulletin 117-Section E)
  - Motor Vehicle Safety Standard No. 302
  - UFAC Class 1
  - BIFMA
- Contact our Sales Representative for details

\*NOTE: Terms and corresponding data refer to performance in the specific test indicated and should not be construed to imply the behavior of this or any other material under actual fire conditions.

---

## TECHNICAL DATA

- Width: 54 inches
- Weight: 40 ounces per linear yard
- Roll Length: 30 yards
- Sulfide stain resistant
- Oil resistant
- -20 degree F. cold crack
- Abrasion Resistance - 100,000 double rubs, Wyzenbeek ASTM 04157
- Anti static slip finish
- Ultraviolet resistant
- Mildew and bacteria resistant (ASTM G21-70 & G22-76)
- Heat sealable
- Excellent cleanability
- Excellent seam strength

### ADDITIONAL INFORMATION AND CLEANING INSTRUCTIONS:

PREMIER is specially formulated to resist the following bacteria, and many others, when tested using the AATC method 147-1986: *Aspergillus Niger*; *Penicillium Pinophilum*; *Chaetomium Globosum*; *Aureobasidium Pullulans*; *Trichoderma sp.*; *Pseudomonas Aeruginosa*; *Staphylococcus Aureus*; and *Klebsiella Pneumoniae*.

Cleaning Instructions: Ordinary dirt and stains can be removed with mild soap and water. Rinse the cleaned area with clear water and dry with a soft, lint free cloth. As with all stains, prompt cleaning is recommended. PREMIER will resist, without serious discoloration, the repeated action of normal dilutions of chlorine bleaches or ammonia based cleaners used for sterilization and cleaning in medical environments.

## ORDERS

When placing orders please indicate:

- 1) Grade - Premium Grade Expanded
- 2) Pattern Name - Premier
- 3) Pattern Number - BA 636
- 4) Color Name and Number